

ULTRAJET[®] 340

New UltraJet 340 Features & Benefits

- **New low profile for lower decks**
- **New hydrodynamic intake housing**
- **Higher inspection cover to prevent overflow**
- **Improved reversing with new reverse deflector**
- **New inboard hydraulic cylinder for reverse deflector operation**
- **Higher mid-range thrust for improved cruising speed and economy**
- **Less static hull immersion required for initial priming**
- **Wide range of Ultra-developed mechanical and electrical reversing controls**
- **Standard rubber impeller shaft bearing or optional composite bearing if dry running is required**
- **Light weight and compact design with a variety of on jet mounted control systems**
- **High propulsive efficiency**
- **Superior manoeuvrability. Ability to accelerate quickly, reverse, stop, rotate, hold station and move sideways for ease of docking.**
- **Excellent resistance to cavitation in displacement craft - high thrust at low speed**
- **Lower vibration and noise levels than other propulsion methods**

Description

The **NEW ULTRAJET 340** with a 13.4" (340mm) diameter impeller provides higher thrust per horsepower when matched to modern engines in the 310-540 bhp range. The UJ340 is one of a range of high performance UltraJet drives developed for commercial, pleasure and military craft.

SINGLE STAGE design utilising four or five bladed impellers to match the specified engine power at a range of input speeds.

The UltraJet 340 is derived from the Ultra and Dowty jet drive range used in military and commercial applications for almost forty years. The UJ340 incorporates an efficient and robust axial flow pump, reverse and steering controls, and has many of the same design features as the other modern "UltraJet designs".

Planing Craft (above 25 knots)

Maximum input power 403 kW (540 bhp)
Higher input powers may be approved upon review of the application details.
Suitable for craft displacements as follows:-

Single jet up to 9 tonnes (19,836 lb.)
Twin jets up to 20 tonnes (44,080 lb.)
Triple jets up to 32 tonnes (70,528 lb.)

Displacement Craft (below 15 knots)

Max input power 231 kW (310 bhp)
Suitable for craft displacements as follows:-

Note: The displacement figures below can often be exceeded on good hull shapes.

Single jet up to 15 tonnes (33,060 lb.)
Twin jets up to 33 tonnes (72,732 lb.)
Triple jets up to 55 tonnes (121,220 lb.)

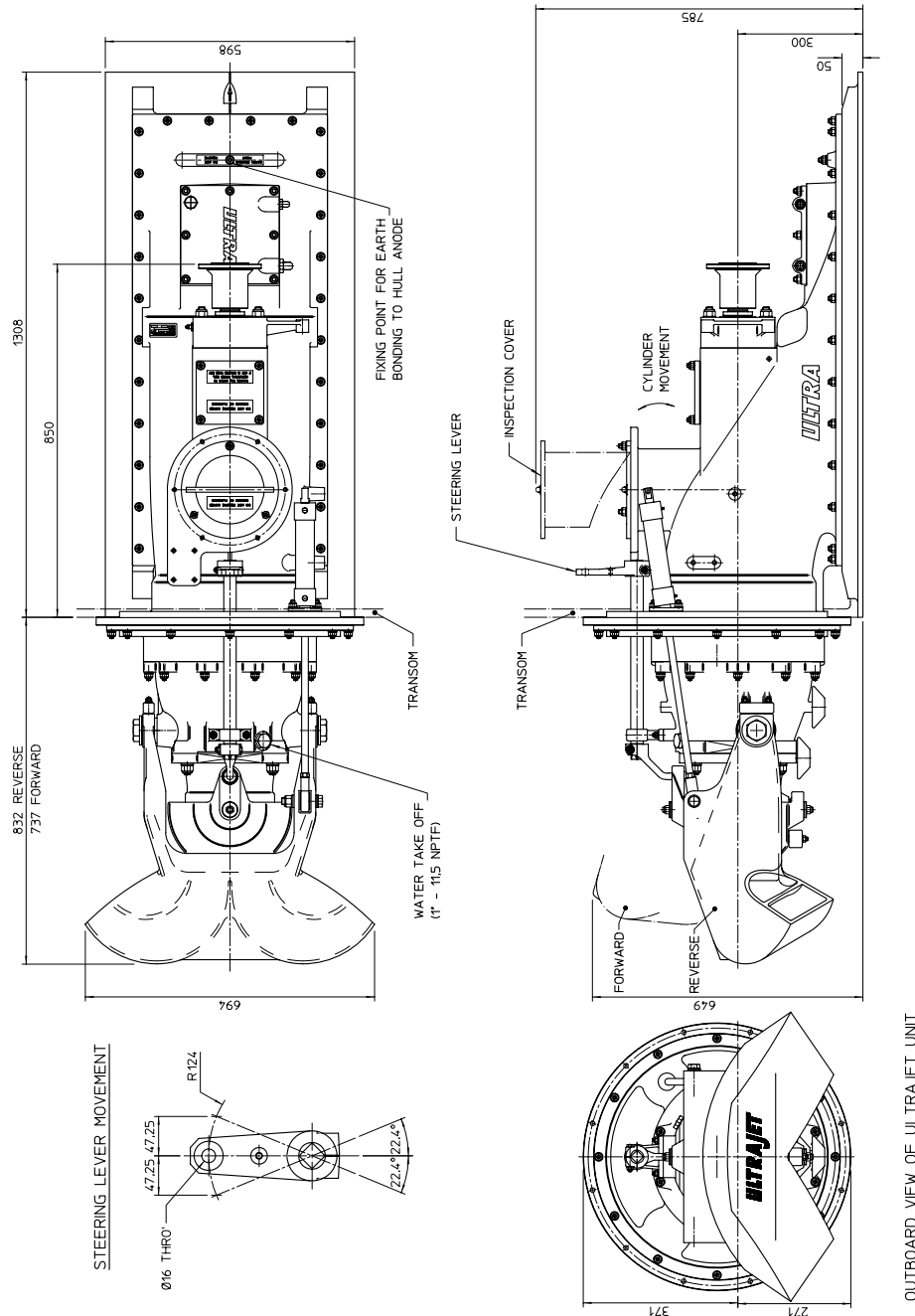


Lloyds ISO9001 Approved

UltraJet 340 Installation Data

Typical Specifications:

1. Impellers are available to match most diesel and gasoline engine and transmission combinations for optimum thrust performance.
2. DIN, SAE or other drive flange options can be supplied.
3. Unit weight 250 kg (551 lb) dry (Includes hydraulic system and controls). 291 kg (641 lb) including entrained water.
4. Consult ULTRA Dynamics Technical Department for vessel and performance analysis.



OUTBOARD VIEW OF ULTRAJET UNIT

Ultra Dynamics Limited

Upperfield Road,
Kingsditch Trading Estate
Cheltenham, Glos, GL51 9NY, England.
Tel: +44(0) 1242 707900 Fax: +44(0) 1242 707901
E-mail: Sales@ultradynamics.demon.co.uk

Ultra Dynamics Marine, LLC

1110A Claycraft Road
Columbus, Ohio 43230, U.S.A.
Tel: (614) 759 9000
Fax: (614) 759 9046
E-mail: sales@ultradynamics.com

www.ultradynamics.com

We have a policy of continuous improvement in design. Specifications may, therefore, be changed without notice.
When considering applications for this equipment it is recommended that our Technical Sales Department is consulted.