

# ULTRAJET<sup>®</sup> 377

## New UltraJet 377 Features & Benefits

- Compact design with jet-mounted control system
- High propulsive efficiency
- Superior manoeuvrability. Ability to accelerate quickly, reverse, stop, rotate, hold station and move sideways/easier docking
- Excellent resistance to cavitation in displacement craft - superior thrust at low boat speeds compared to other propulsion systems
- Lower vibration and noise levels than other propulsion methods
- Manufactured to highest military and marine quality standards
- Integral hydraulic reservoir and oil cooler
- UltraJet Joystick Control Systems mean complex craft manoeuvres are easier for the operator. Simple to fit - supplied as plug and play
- Inboard hydraulic cylinders for reverse deflector operation
- Ultra-developed electrohydraulic reversing controls
- Integral jet-driven hydraulic pump
- Higher mid-range thrust for improved cruising speed and fuel economy
- Minimal service costs over life of system

## Description

The **NEW ULTRAJET 377** with a 377mm (14.8") diameter impeller provides higher thrust per horsepower when matched to modern engines up to 700 bhp. The UJ377 is the latest in the range of high performance UltraJet drives developed for commercial, pleasure and military craft.

SINGLE STAGE design utilising four or five blade impellers to match the specified engine power at a range of input speeds.

The UltraJet 377 is derived from the Ultra and Dowty jet drive range used in military and commercial applications. The hydrodynamically designed UJ377 incorporates an efficient and robust axial flow pump, reverse and steering controls, and is the culmination of over 45 years of research, development and practical experience.

### Planing Craft (above 25 knots)

Maximum input power 522 kW (700 bhp). Higher input powers may be approved upon review of the application details. Suitable for craft displacements as follows:-

Single jet up to 12 tonnes (26,448 lb.)  
Twin jet up to 26 tonnes (57,304 lb.)  
Triple jet up to 42 tonnes (92,568 lb.)

### Displacement Craft (below 15 knots)

Maximum input power 261 kW (350 bhp). Suitable for craft displacements as follows:-

Single jet up to 20 tonnes (44,080 lb.)  
Twin jet up to 45 tonnes (99,180 lb.)  
Triple jet up to 90 tonnes (198,360 lb.)

*The upper displacement figures shown for planing craft are maximum displacement values for use only on very good planing hulls. Best efficiency would be achieved when using jets at the lower displacement figures or below.*

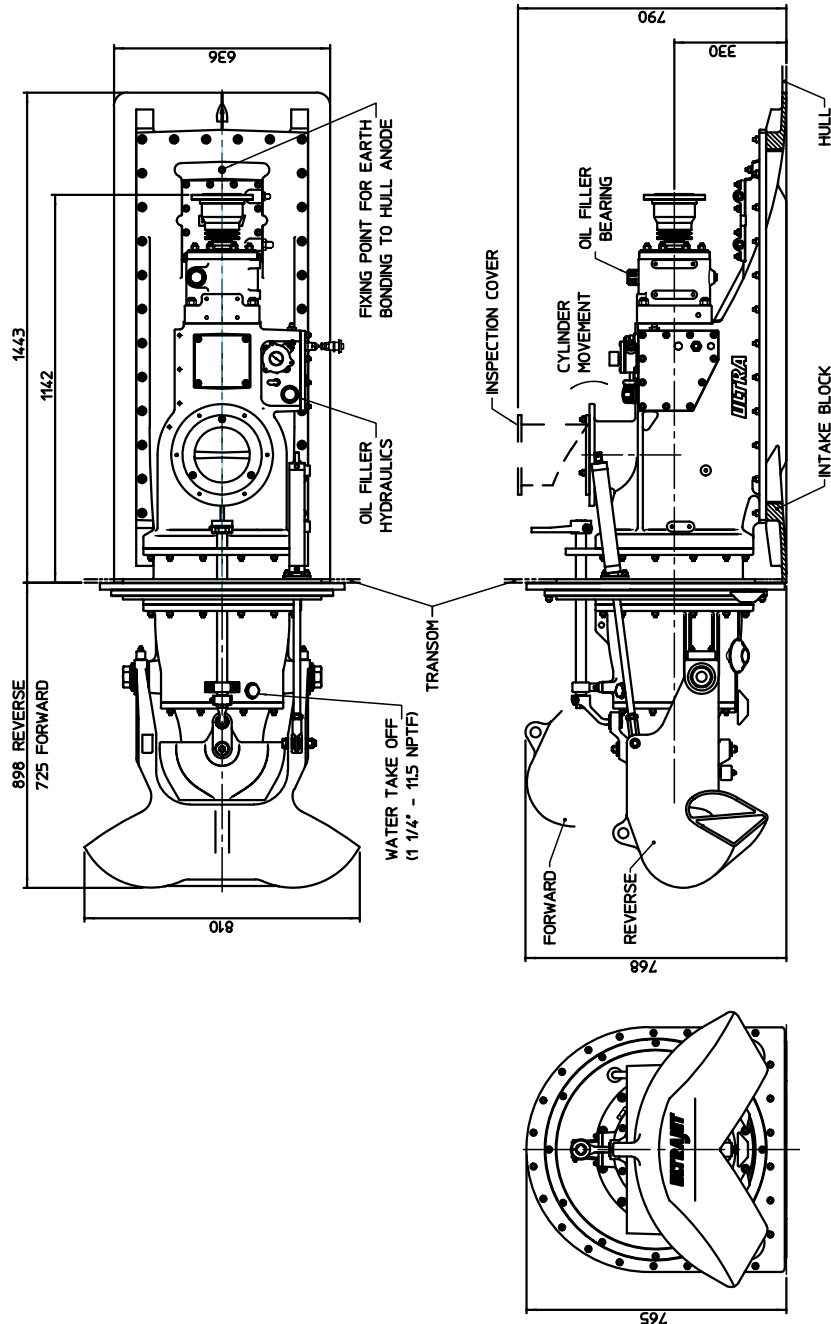


**Ultra Dynamics is Lloyds ISO9001 Certified**

## UltraJet 377 Installation Data

### Typical Specifications:

1. Impellers are available to match most diesel engine and transmission combinations for optimum thrust performance.
2. DIN, SAE or other drive flange options are available.
3. Unit weight 389 kg (856 lb.) dry (including hydraulic system and control valves). 471 kg (1036 lb.) including entrained water.
4. Consult ULTRA Dynamics Technical Department for vessel and performance analysis.



OUTBOARD VIEW OF ULTRAJET UNIT

### Ultra Dynamics Limited

Upperfield Road,  
Kingsditch Trading Estate  
Cheltenham, Glos, GL51 9NY, England.  
Tel: +44(0) 1242 707900 Fax: +44(0) 1242 707901  
E-mail: sales@ultrajet.co.uk

### Ultra Dynamics Marine, LLC

1110A Claycraft Road  
Columbus, Ohio 43230, U.S.A.  
Tel: 614-759-9000  
Fax: 614-759-9046  
E-mail: sales@ultradynamics.com

[www.ultradynamics.com](http://www.ultradynamics.com)

*We have a policy of continuous improvement in design. Specifications may, therefore, be changed without notice.  
When considering applications for this equipment it is recommended that our Technical Sales Department is consulted.*