

ULTRAJET[®] 451

New UltraJet 451 Features & Benefits

- **New low profile for lower decks**
- **New hydrodynamic intake housing with integral oil cooler**
- **Higher inspection cover to prevent overflow**
- **Higher mid-range thrust for improved cruising speed and economy**
- **Less static hull immersion required for initial priming**
- **Wide range of Ultra-developed hydromechanical and electrohydraulic reversing controls**
- **Standard rubber impeller shaft bearing or optional composite bearing if dry running is required**
- **High propulsive efficiency**
- **Superior manoeuvrability. Ability to accelerate quickly, reverse, stop, rotate, hold station and move sideways for ease of docking.**
- **Excellent resistance to cavitation in displacement craft - high thrust at low speed**
- **Lower vibration and noise levels than other propulsion methods**

Description

The UltraJet 451 is derived from the Ultra (formerly Dowty) jet drive range, which has been used extensively in military and commercial applications for over 40 years.

The UltraJet 451 is a single stage axial flow design incorporating an impeller with a diameter of 450mm (17.7 inches), which develops higher thrust per horsepower at boat speeds between 0 - 20 knots than any equivalent sized waterjet on the market.

The hydraulic reverse control system has been totally integrated onto the waterjet, simplifying the installation for the boat builder and allowing the complete reverse control system to be factory tested before despatch.

Planing Craft (above 25 knots)

Maximum input power 900 kW (1200 bhp)
Higher input powers may be approved upon review of the application details.
Suitable for craft displacements as follows:-

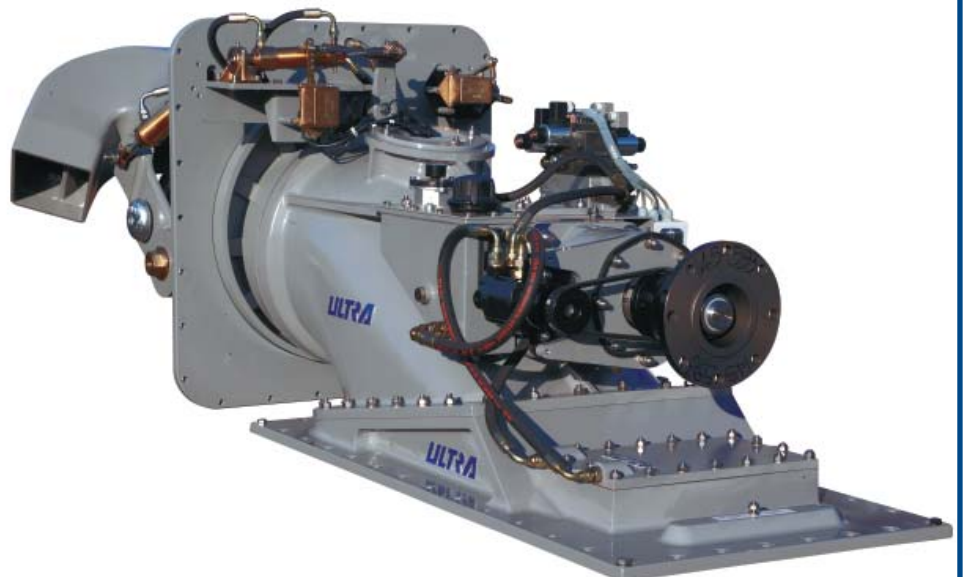
Single Jet up to 16 tonnes (35,264 lb.)
Twin jets up to 35 tonnes (77,140 lb.)
Triple jets up to 55 tonnes (121,220 lb.)

Displacement Craft (below 15 knots)

Maximum input power 373 kW (500 bhp).
Suitable for craft displacements as follows:-

Note: The displacement figures below can often be exceeded on good hull shapes.

Single jet up to 32 tonnes (70,528 lb.)
Twin jets up to 65 tonnes (143,260 lb.)
Triple jets up to 100 tonnes (220,400 lb.)

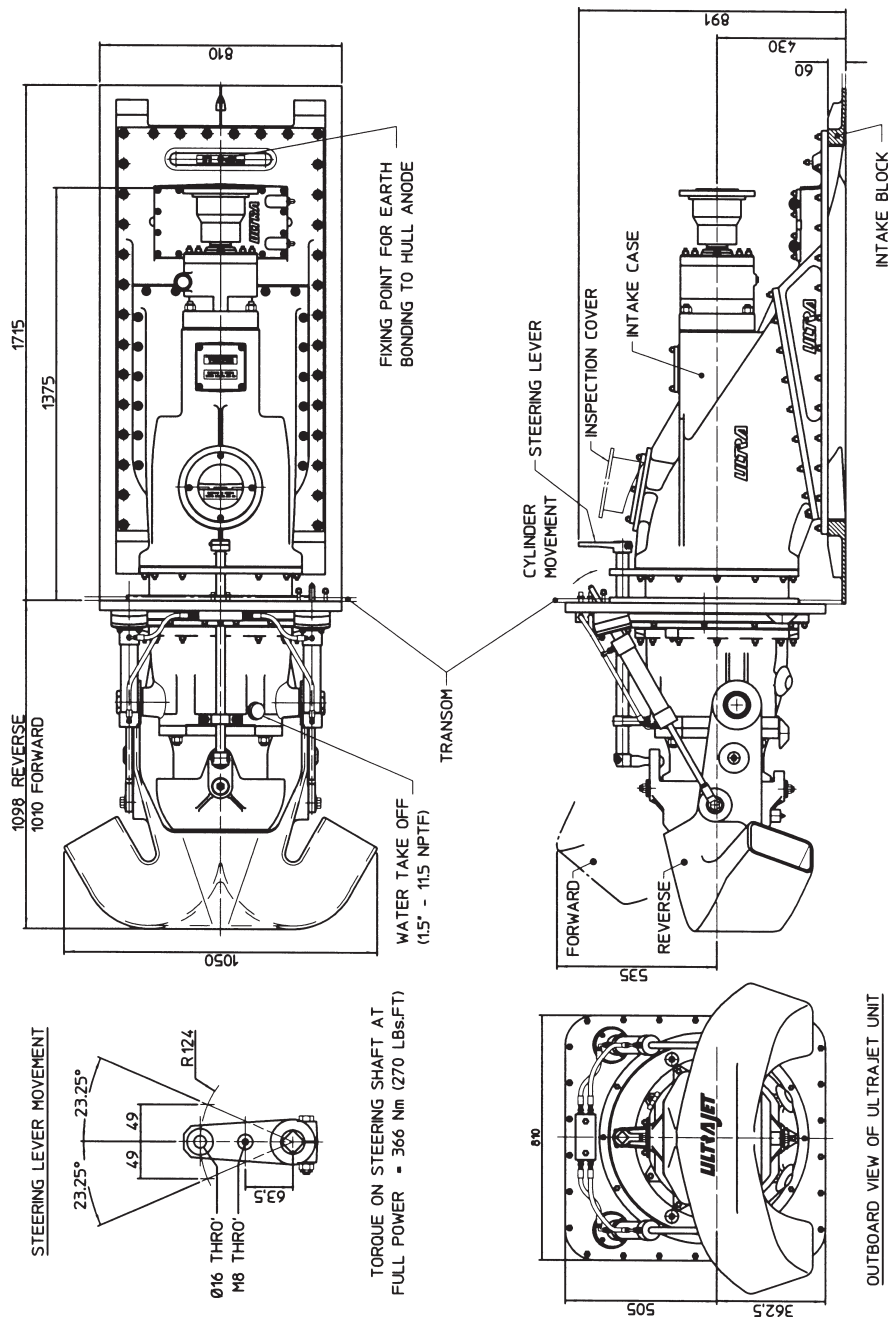


Lloyds ISO9001 Approved

UltraJet 451 Installation Data

Typical Specifications:

1. Impellers are available to match most diesel engine and transmission combinations for optimum thrust performance.
2. DIN, SAE or other drive flange options can be supplied.
3. Unit weight 657 kg (1,449 lb) dry (including hydraulic system and controls). 777 kg (1,713 lb) including entrained water.
4. Consult ULTRA Dynamics Technical Department for vessel and performance analysis.



Ultra Dynamics Limited

Upperfield Road,
Kingsditch Trading Estate
Cheltenham, Glos, GL51 9NY, England.
Tel: +44(0) 1242 707900 Fax: +44(0) 1242 707901
E-mail: sales@ultrajet.co.uk

Ultra Dynamics Marine, LCC

1110A Claycraft Road
Columbus, Ohio 43230, U.S.A.
Tel: (614) 759 9000
Fax: (614) 759 9046
E-mail: sales@ultradynamics.com

www.ultradynamics.com

We have a policy of continuous improvement in design. Specifications may, therefore, be changed without notice.
When considering applications for this equipment it is recommended that our Technical Sales Department is consulted.