

# ULTRAJET<sup>®</sup> 525

## New UltraJet 525 Features & Benefits

- Compact design with jet-mounted control system
- High propulsive efficiency
- Superior manoeuvrability. Ability to accelerate quickly, reverse, stop, rotate, hold station and move sideways/easier docking
- Excellent resistance to cavitation in displacement craft - superior thrust at low boat speeds compared to other propulsion systems
- Lower vibration and noise levels than other propulsion methods
- Manufactured to highest military and marine quality standards
- Integral hydraulic oil cooler
- UltraJet Joystick Control Systems mean complex craft manoeuvres are easier for the operator. Simple to fit - supplied as plug and play
- Inboard hydraulic cylinder for reverse deflector operation
- Ultra-developed electrohydraulic reversing controls
- Integral jet-driven hydraulic pump
- Higher mid-range thrust for improved cruising speed and fuel economy
- Minimal service costs over life of system

## Description

The **NEW ULTRAJET 525** with a 525mm (20.7") diameter impeller provides higher thrust per horsepower when matched to modern engines in the 500-1100 kW range. The UJ525 is the latest in the range of high performance UltraJet drives developed for commercial, pleasure and military craft.

SINGLE STAGE design utilising four or five blade impellers to match the specified engine power at a range of input speeds.

The UltraJet 525 is derived from the Ultra and Dowty jet drive range used in military and commercial applications. The hydro-dynamically designed UJ525 incorporates an efficient and robust axial flow pump, reverse and steering controls, and is the culmination of over 45 years of research, development and practical experience.

### Planing Craft (above 25 knots)

Maximum input power 1100 kW (1475 bhp). Higher input powers may be approved upon review of the application details. Suitable for craft displacements as follows:-

Single jet up to 20 tonnes (44,080 lb.)  
Twin jet up to 45 tonnes (99,180 lb.)  
Triple jet up to 72 tonnes (158,688 lb.)

### Displacement Craft (below 15 knots)

Maximum input power 500 kW (670 bhp). Suitable for craft displacements as follows:-

Single jet up to 45 tonnes (99,180 lb.)  
Twin jet up to 95 tonnes (209,380 lb.)  
Triple jet up to 145 tonnes (319,580 lb.)

*The upper displacement figures shown for planing craft are maximum displacement values for use only on very good planing hulls. Best efficiency would be achieved when using jets at the lower displacement figures or below.*

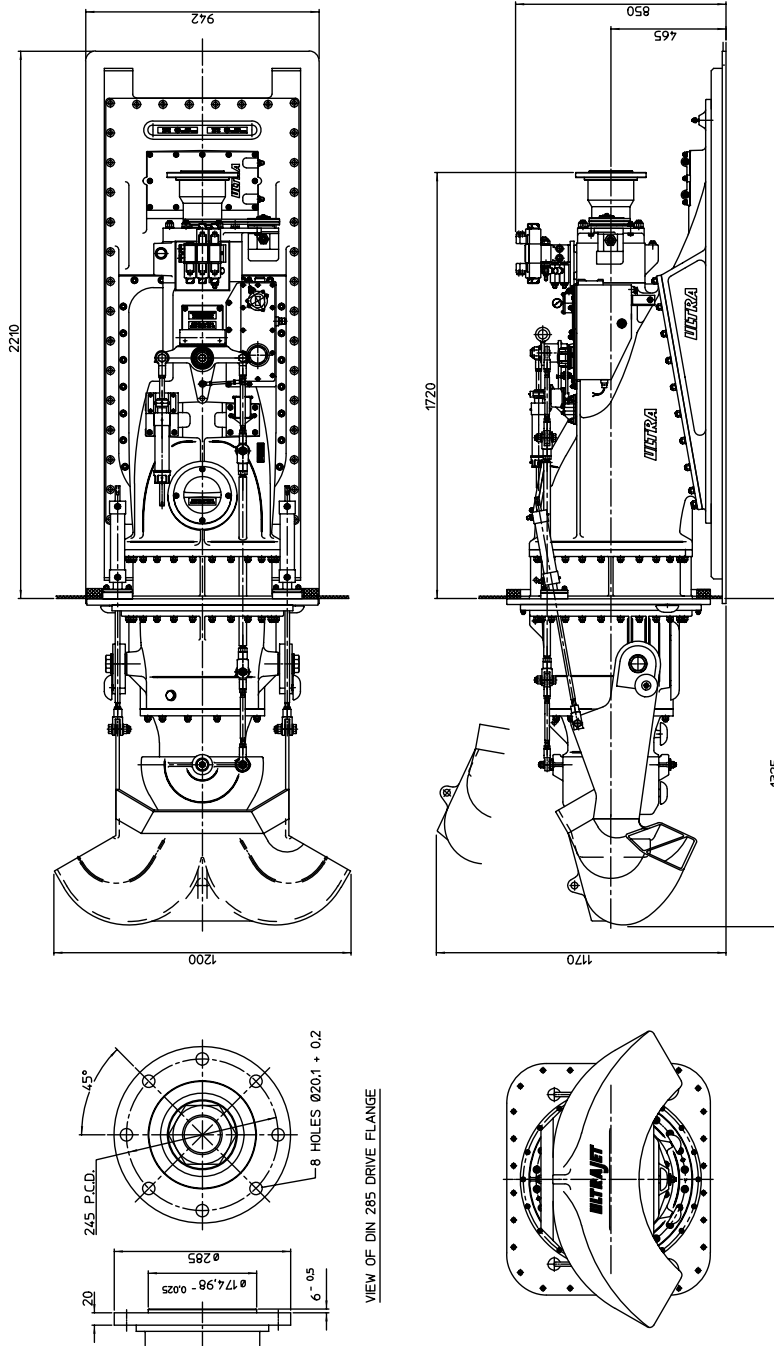


**Ultra Dynamics is Lloyds ISO9001 Certified**

# UltraJet 525 Installation Data

## Typical Specifications:

1. Impellers are available to match most diesel engine and transmission combinations for optimum thrust performance.
2. DIN, SAE or other drive flange options are available.
3. Unit weight 1,150 kg (2,535 lb.) dry. 1,328 kg (2,927 lb.) including entrained water. (For guideline only - if a detailed weight analysis is required please contact our Technical Department.)
4. Consult ULTRA Dynamics Technical Department for vessel and performance analysis.



### Ultra Dynamics Limited

Upperfield Road,  
Kingsditch Trading Estate  
Cheltenham, Glos, GL51 9NY, England.  
Tel: +44(0) 1242 707900 Fax: +44(0) 1242 707901  
E-mail: Sales@ultrajet.co.uk

### Ultra Dynamics Marine, LLC

1110A Claycraft Road  
Columbus, Ohio 43230, U.S.A.  
Tel: 614-759-9000  
Fax: 614-759-9046  
E-mail: sales@ultradynamics.com

[www.ultradynamics.com](http://www.ultradynamics.com)

*We have a policy of continuous improvement in design. Specifications may, therefore, be changed without notice.  
When considering applications for this equipment it is recommended that our Technical Sales Department is consulted.*